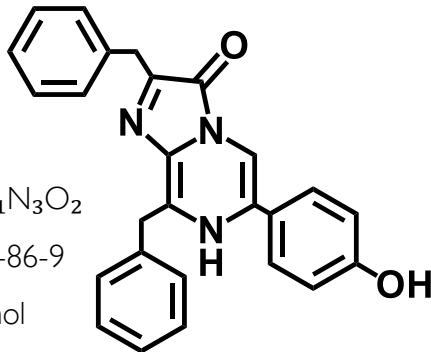


Substrates of luciferase

Coelenterazine-h



Formula: $C_{26}H_{21}N_3O_2$

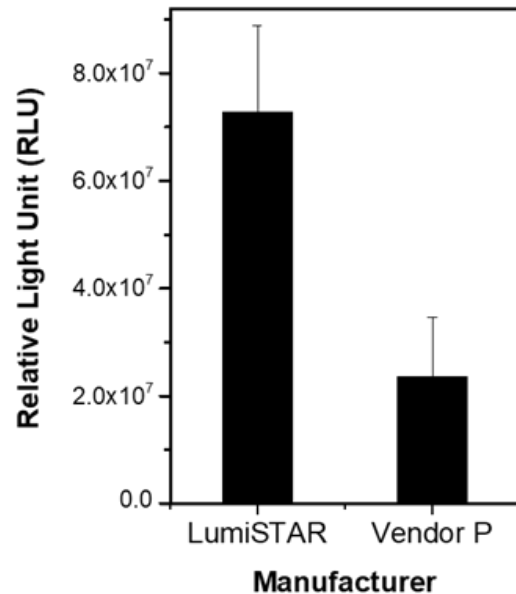
CAS No: 50909-86-9

MW: 307.47 g/mol

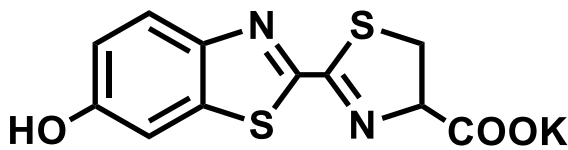
Package: 200ug, 500ug and 1mg

Storage/Handling: Store desiccated at $-20\text{ }^{\circ}\text{C}$ and protect from light.

Cat No: KCTZ-01



D-luciferin potassium salt (firefly luciferin)



Formula: $C_{11}H_7N_2O_3S_2K$

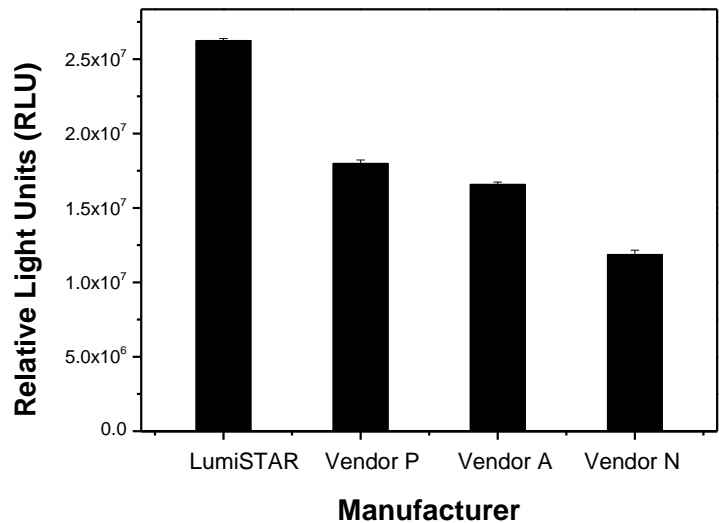
CAS No.: 115144-35-9

MW: 318.42 g/mol

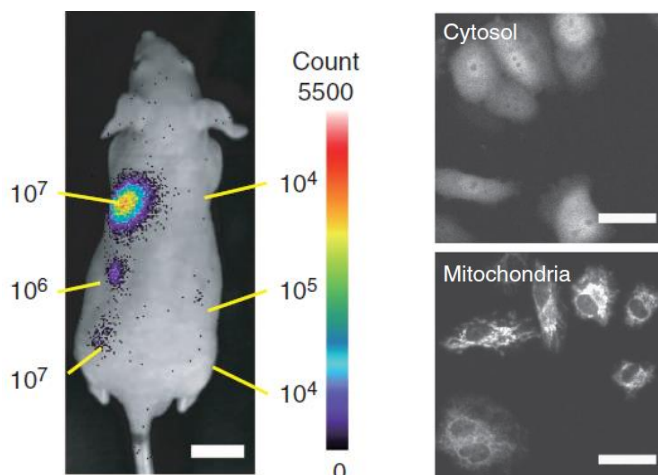
Package: 500mg and 1g

Storage/Handling: Store desiccated at $-20\text{ }^{\circ}\text{C}$ and protect from light.

Cat No: KLCF-01

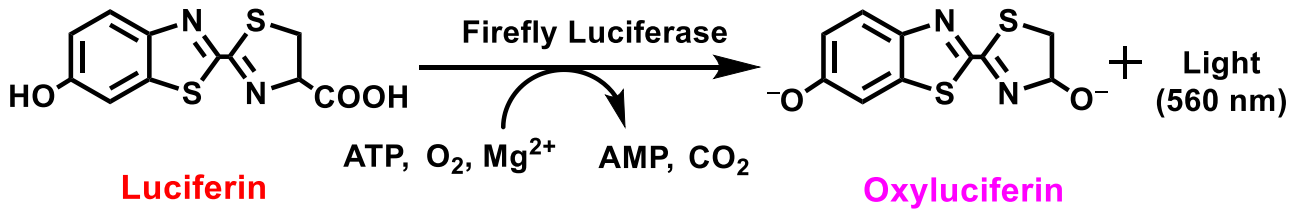


Examples of application:



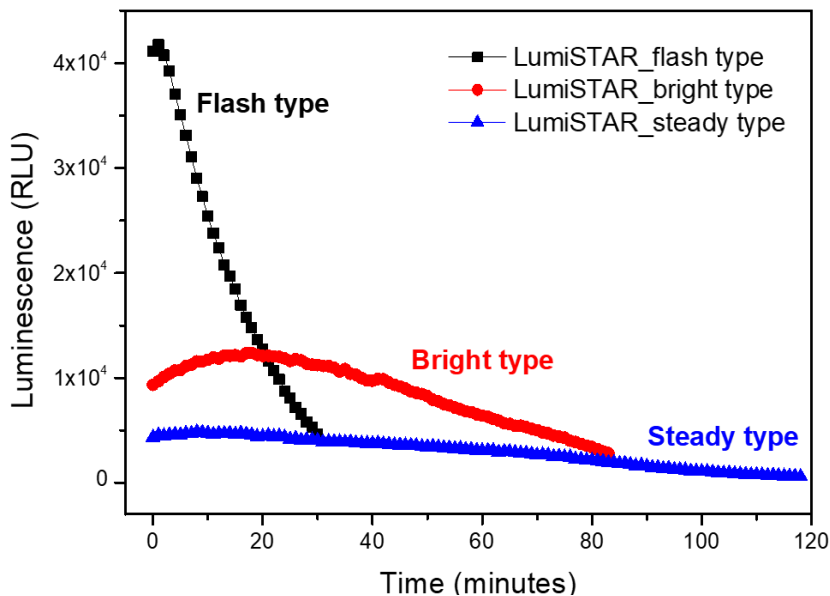
- 💡 *In vivo* imaging
- 💡 Live cell imaging
- 💡 Reporter assay
- 💡 Luciferase based assay

Firefly Luciferase Assay Kit



Comparison of various Luciferase assay kit

Item	Step	Half time	Sensitivity	Reaction time
Flash Type	1	15 mins	★★★★★	
Bright Type	1	30 mins	★★★★★	5 mins
Steady Type	1	120 mins	★★★★★	10 mins



Product characteristics

- 💡 High sensitivity
- 💡 Easy to use
(Only add reagent and reading)

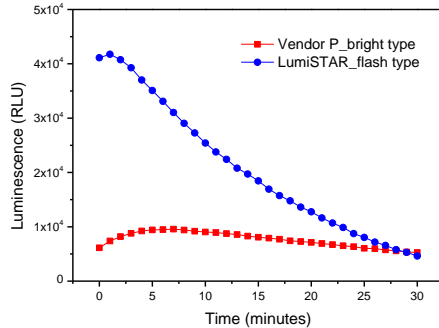
Products

Item	Pack	Cat. No.
Flash Type Luciferase Assay System	10 mL	KLCF-0201
	10 x 10 mL	KLCF-0202
Bright Type Luciferase Assay System	10 mL	KLCF-0301
	10 x 10 mL	KLCF-0302
Steady Type Luciferase Assay System	10 mL	KLCF-0401
	10 x 10 mL	KLCF-0402

Firefly Luciferase Assay Kit

Flash Type Luciferase Assay System

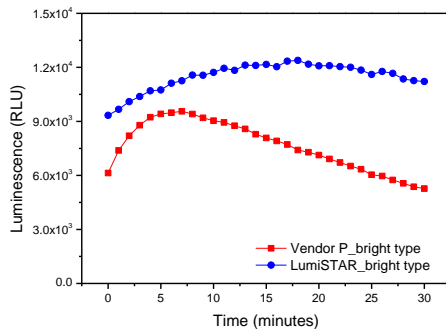
Cat. No. KLCF-0201, KLCF-0202



- 💡 High sensitivity
- 💡 Easy to use
- 💡 Prompt
- 💡 Recommended with Auto-injector

Bright Type Luciferase Assay System

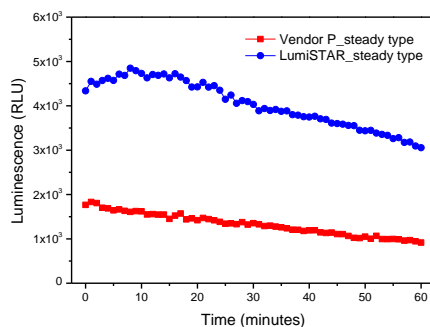
Cat. No. KLCF-0301, KLCF-0302



- 💡 High sensitivity
- 💡 Easy to use
- 💡 Half time = 30 mins

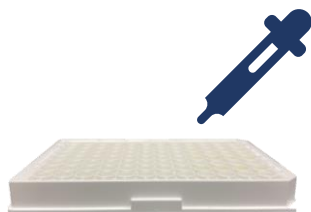
Steady Type Luciferase Assay System

Cat. No. KLCF-0401, KLCF-0402



- 💡 High sensitivity
- 💡 Easy to use
- 💡 Long-lasting luminescence
- 💡 Half time = 2 hrs

Procedure Summary



Remove medium, add
Luciferase assay reagent.

Waiting reaction time
0 / 5 / 10 mins



Read signal and analyze data.